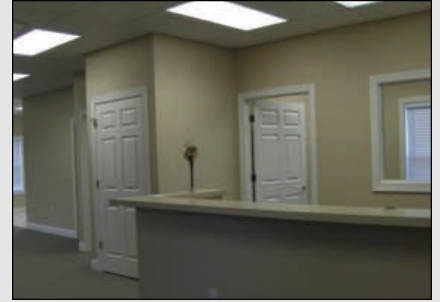


COMMERCIAL



**COMMERCIAL CONDO
FOR SALE: \$349,000**

**23 PLANTATION PARK RD., STE 304
BLUFFTON, SC 29910**



SALE

- 1,950 Sq. Ft.
- Exceptionally Large Open Space
- 8 Separate Rooms with 3 Wash Basins, 1 Bath, Reception Area and Waiting Area
- Quality, Proven Location for Business Office, Medical or Other Professional Services

LEASE TERMS

- \$12.50 per sf. 3 Year Term. 3% Increase Per Year after 1st Year, Regime Fee: \$375 per Month

For details on this or other listings visit our website WRCPcommercial.com or call 843.686.6700.

Jim Livingston, Commercial Realtor®
Cell 843.812.9399 . Jimlivingstonrealestate@gmail.com



